



GAT MONTHLY MEMBERSHIP PROGRESS REPORT

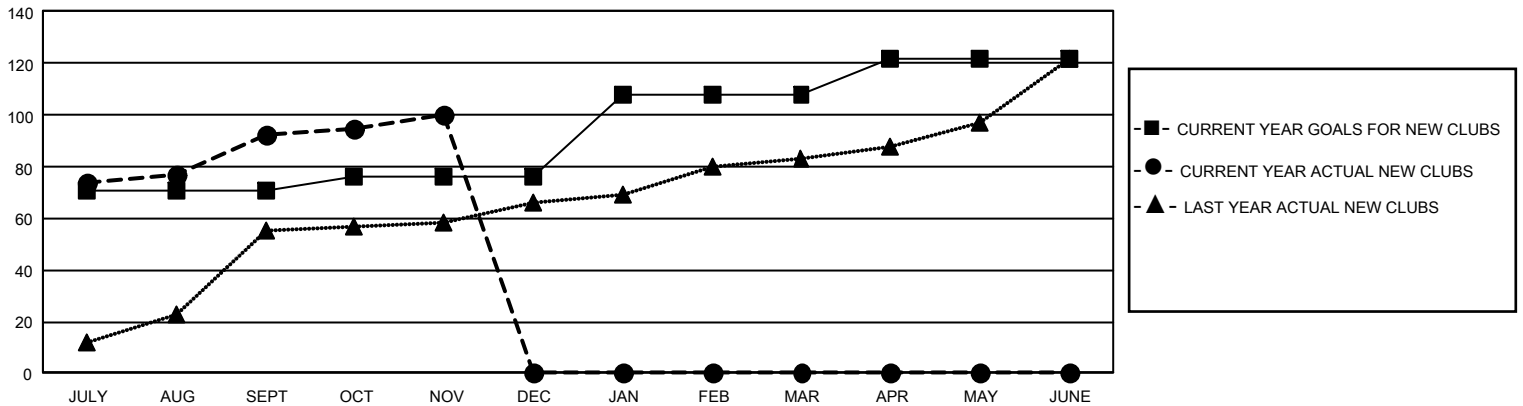
Results as of: 11/30/2025

GMT Constitutional Area 6 - I, Group G

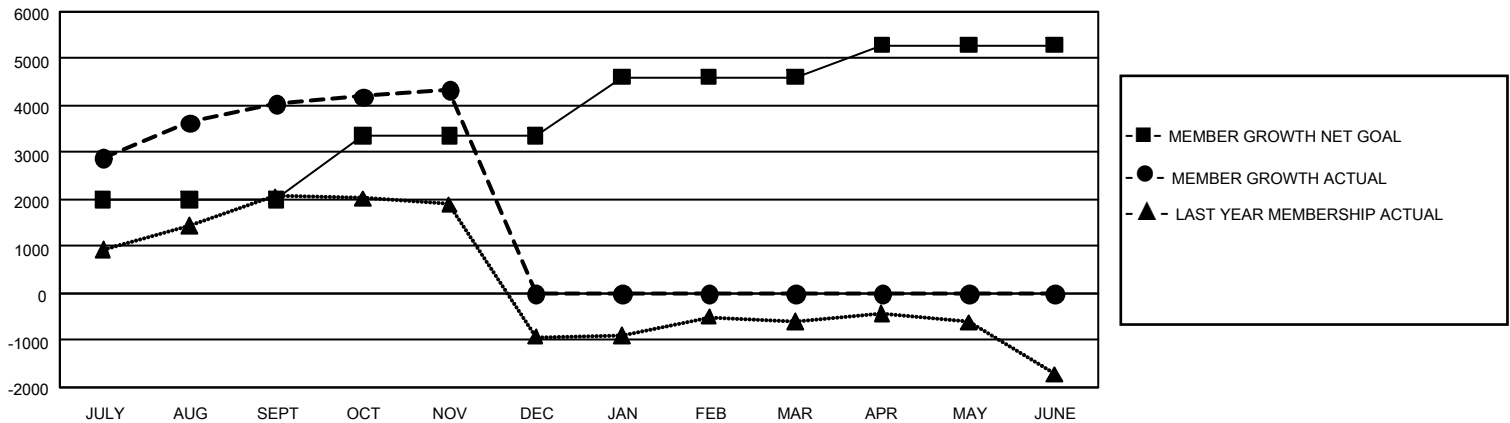
REPORT DOES NOT INCLUDE CLUBS IN UNDISTRICTED AREAS.

Clubs				Members			
RESULTS FOR 2025-2026				RESULTS FOR 2025-2026			
QUARTER	NEW CLUB GOAL	NEW CLUBS	DROPPED CLUBS	QUARTER	MEMBER GROWTH NET GOAL	MEMBER GROWTH ACTUAL	DROPPED MEMBERS ACTUAL (including transfers)
JULY/AUG/SEPT	213	92	22	JULY/AUG/SEPT	1990	5,144	818
OCT/NOV/DEC	15	8	4	OCT/NOV/DEC	1370	1,047	683
JAN/FEB/MAR	96	0	0	JAN/FEB/MAR	1255	0	0
APR/MAY/JUNE	42	0	0	APR/MAY/JUNE	675	0	0

GOALS AND ACTUAL NEW CLUBS CUMULATIVE



GOALS AND ACTUAL MEMBERS CUMULATIVE



DROPPED CLUBS: 26

715 CLUBS OF 1,207 ADDED 1 OR MORE NEW MEMBERS

GENDER DISTRIBUTION

MALE	29,396 (67.87%)
FEMALE	13,909 (32.11%)
NON BINARY	1 (0.00%)
PREFER NOT TO ANSWER	8 (0.02%)

DROPPED MEMBERS

DECEASED	44
CLUB CANCELLED	535
OTHER	913
TOTAL	1,492

[CLICK HERE FOR CUMULATIVE MEMBERSHIP DATA](#)

TOTAL FAMILY UNIT MEMBERS 18,418

FAMILY MEMBERS PAYING HALF DUES 10,917